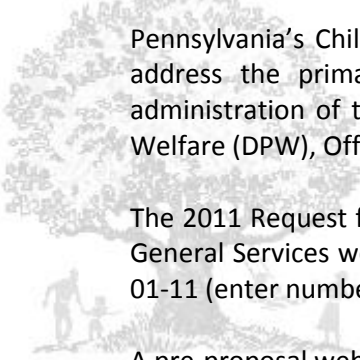


General Information



Pennsylvania's Children's Trust Fund (CTF) is dedicated to funding community-based programs to address the primary prevention of child abuse and neglect. The CTF operates under the administration of the Children's Trust Fund Board and is supported by the Department of Public Welfare (DPW), Office of Child Development and Early Learning (OCDEL).

The 2011 Request for Application (RFA #01-11) was issued on March 7, 2011 on the Department of General Services website at <http://www.emarketplace.state.pa.us/Search.aspx>, enter Solicitation #: 01-11 (enter numbers and dashes only).

A pre-proposal webinar will be held on March 24, 2011 from 9:30 a.m. to 11:30 a.m. for the purpose of answering any questions related to this RFA. Please register for the webinar on the Center for Schools and Communities website at www.center-school.org/ctf by March 23, 2011.

If an applicant has any questions regarding this RFA, the applicant must submit the questions via email (with the subject line "RFA #01-11 Question") to the RFA Project Officer named on the cover page of the RFA. The applicant shall not attempt to contact the RFA Project Officer by any other means. **Questions must be submitted via email no later than March 16, 2011** to ensure adequate time for analysis before DPW provides an answer. **The applicant may also ask questions during the pre-proposal webinar. No questions will be accepted either verbally or in writing after the end of the pre-proposal webinar.** The pre-proposal webinar is for information only. **Any answers furnished during the webinar will not be official until they have been verified, in writing, by the Issuing Office.** The Issuing Office shall post all written answers to the questions submitted on the DGS website at <http://www.emarketplace.state.pa.us/Search.aspx>, Solicitation #: 01-11.

Applications will be due on May 10, 2011. Please refer to RFA #01-11 for more detailed information.

Applicants may apply for up to \$40,000 each year for three years. A 25 percent local match is required in the first year, and a 50 percent local match is required in the second and third years each.

Funding Focus

Young parents are simultaneously faced with the developmental challenges of adolescence; the demands of parenting; and the responsibility for the cognitive, social and emotional development of a child. The most effective teen parenting programs are multi-faceted and comprehensive, addressing adolescent issues, parenting concerns and child development topics.¹

Selected grantees will use evidence- or research-based methods to provide comprehensive support services to pregnant and parenting teens and young adults that will strengthen families and build protective factors to prevent child abuse and neglect.

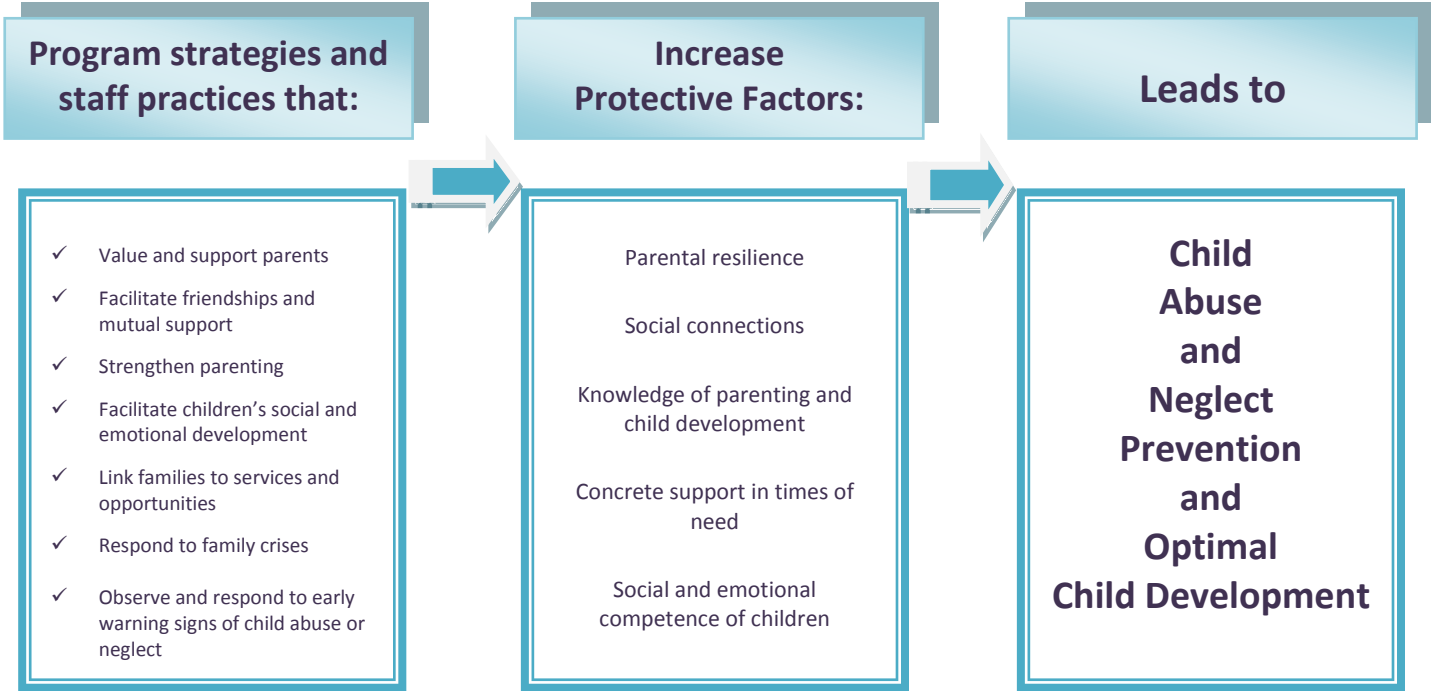
¹ *Providing Educational Services and Support to Pregnant and Parenting Teen Students*; page 19; Center for Schools and Communities under contract with the Pennsylvania Department of Education, Harrisburg, PA; April 2007; www.center-school.org.

Grantees must collaborate and coordinate with overarching county or community collaborative or advisory groups and services that focus on early childhood and child abuse and neglect prevention issues to identify needs, avoid duplication of services and assure sustainability of the services. Priority will be given to applicants that provide services in areas where no Project ELECT programs are available.

Strengthening Families

Children’s Trust Fund RFA #01-11 will focus on the prevention of child abuse and neglect by providing supportive services to pregnant and parenting teens and young adults that ultimately strengthen families through the use of five protective factors outlined in the Center for the Study of Social Policy’s *Strengthening Families™* approach. Ongoing research conducted by the CSSP has shown that the presence and prominence of five protective factors in families reduces the likelihood of child abuse and neglect and contributes to excellent outcomes for young children. For more information, please visit www.strengtheningfamilies.net.

How Early Childhood Programs Help Prevent Child Abuse and Neglect²
All child- and family-serving organizations and systems build protective factors



² *Protecting Children by Strengthening Families: A Guidebook for Early Childhood Programs*; page 1-7; Center for the Study of Social Policy; Washington, D.C.; April 2004. http://www.strengtheningfamilies.net/images/uploads/program_tools/SF_Guidebook_2nd_Ed.pdf.