

Parents as Teachers Affiliate and Approved User Status



WEDNESDAY, JANUARY 18, 2012
11:00 AM - 11:30 AM (EASTERN TIME)

PRESENTER:
BECKY BLUE
PENNSYLVANIA PAT STATE LEADER



Parents as Teachers



Parents as Teachers
State Office

Parents as Teachers

Today's Presenter



Becky Blue

Early Childhood and Family Development Program Manager
Pennsylvania Parent Information and Resource Center (PA PIRC)
Center for Schools and Communities
275 Grandview Ave., Suite 200
Camp Hill, PA 17011
www.center-school.org/pa-pirc
717-763-1661 x 162
bblue@csc.csiu.org



Parents as Teachers

Housekeeping

- **Question & Answer Opportunities**

We encourage you to ask questions using the text messaging (Chat) feature.

- **Recording of Session and Slides**

A link to the recording of today's session as well as the PowerPoint presentation (in PDF format) will be available within 3 days. You are welcome to view the recording and the PowerPoint at your leisure.

<http://www.center-school.org/pa-pirc>

- **Online Evaluation**

A brief online evaluation will be presented at the conclusion of today's session. Your feedback is important to us. Please take a few minutes to complete the evaluation.



Parents as Teachers

Participant Information

- Using the text messaging (Chat) feature, please provide the following information:
 - The full name of all participants who are joining us but did NOT register for today's session. If available, please also provide their email addresses.

Example: Becky Blue – bblue@csc.csiu.org



Parents as Teachers

Options for PAT Implementation

Affiliate

relationship
between PAT and
your organization
and its staff

Approved User

relationship
between PAT and
individual

Which option is right for you?



Parents as Teachers

Why Choose Affiliate Status



We want to implement an evidence-based home visiting model.

We want an evidence-informed curriculum.

Our organization is able to meet requirements for model fidelity.

<http://www.parentsasteachers.org/results/quality-a-fidelity>



Parents as Teachers

Why Choose Approved User Status



I want to learn the fundamentals of home visiting.

I want an evidence-informed curriculum.

My organization is not able to meet requirements for model fidelity.

<http://www.parentsasteachers.org/results/quality-a-fidelity>




Parents as Teachers

**Evidence –
Based &
Evidence -
Informed
Programs**
Program
Characteristics

1. Articulates a theory of change which specifies outcomes and activities
2. Has a book, manual, training or other available writings
3. Is generally accepted in clinical practice as appropriate for use with children and their parents/caregivers

Sept. 2009
FRIENDS National Resource Center for CBCAP




Parents as Teachers

**Evidence –
Based &
Evidence -
Informed
Programs**
Research &
Evaluation
Characteristics

1. No evidence of harm
2. Approved research
3. Sustained effect
4. Reliable and valid outcomes
5. Program efficacy
6. Continuous quality improvement
7. Model fidelity

Sept. 2009
FRIENDS National Resource Center for CBCAP



Parents as Teachers

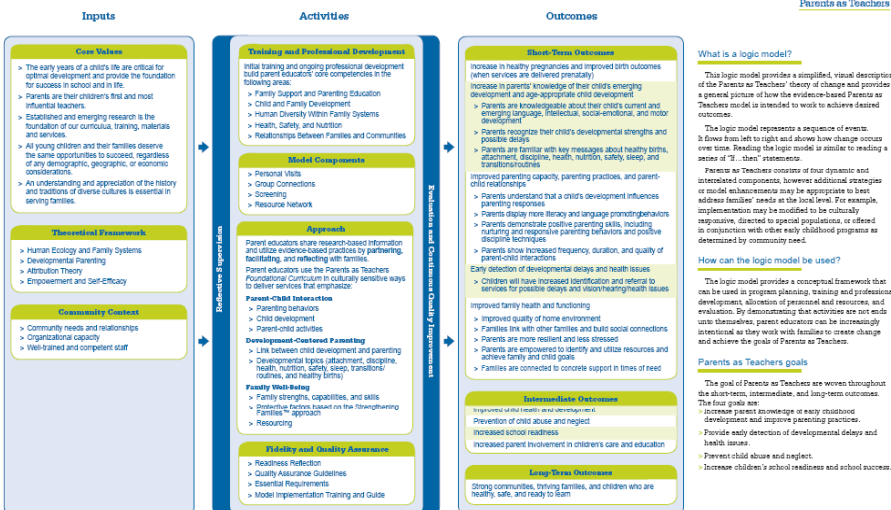
Parents as Teachers Model

Parents as Teachers has been named as one of the nine approved home visiting models meeting the evidence-based criteria of the federally funded Maternal, Infant, Early Childhood Home Visiting program (MIECHV).



Parents as Teachers

PARENTS AS TEACHERS LOGIC MODEL



Parents as Teachers

What is a logic model?
 This logic model provides a simplified, visual description of the Parents as Teachers theory of change and provides a general picture of how the evidence-based Parents as Teachers model is intended to work to achieve desired outcomes.

The logic model represents a sequence of events. It flows from left to right and shows how change occurs over time. Reading the logic model is similar to reading a series of "if...then" statements.
 Parents as Teachers consists of four dynamic and interrelated components, however additional strategies or model enhancements may be appropriate to best address families' needs at the local level. For example, implementation may be modified to be culturally responsive, directed to special populations, or offered in conjunction with other early childhood programs as determined by community need.

How can the logic model be used?
 The logic model provides a conceptual framework that can be used in program planning and professional development, allocation of personnel and resources, and evaluation. By demonstrating that activities are successful unto themselves, parent educators can be increasingly intentional as they work with families to create change and achieve the goals of Parents as Teachers.

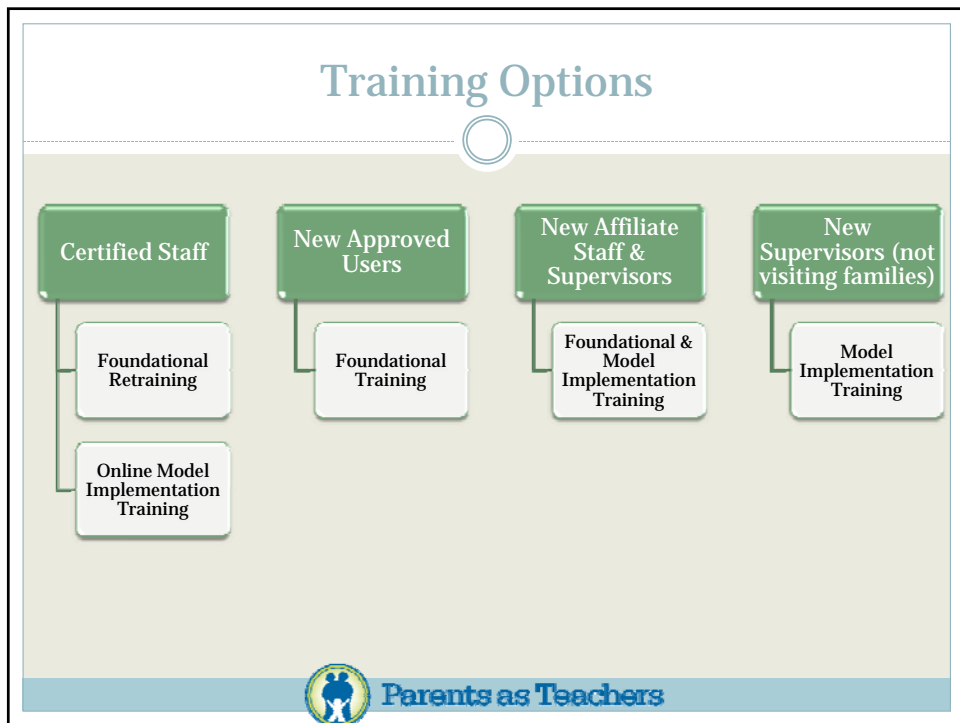
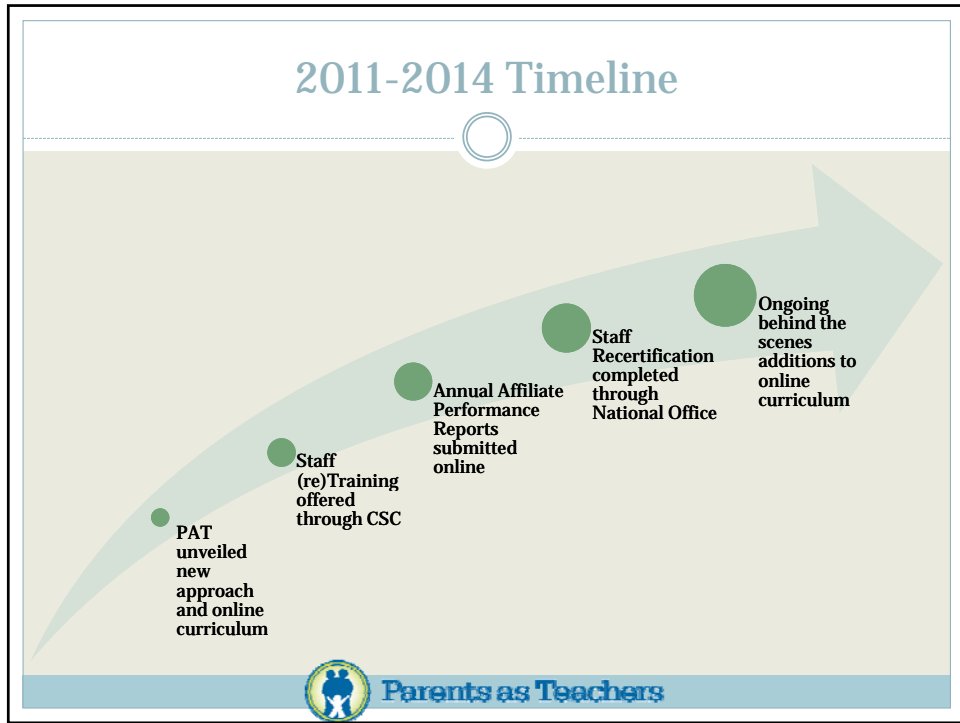
Parents as Teachers goals
 The goal of Parents as Teachers are woven throughout the activities, intermediate, and long-term outcomes. The four goals are:
 - Increase parents' knowledge of early childhood development and improve parenting practices.
 - Provide early detection of developmental delays and health issues.
 - Prevent child abuse and neglect.
 - Increase children's school readiness and school success.

© 2011
 Model of Parents as Teachers

3228 Ball Drive Saint Louis, MO 63141 | 865.947.4700 | 865.729.4866 | www.ParentsAsTeachers.org



Parents as Teachers




Knowledge Studio

○

I just want topic-specific training or professional development.

<http://www.parentsasteachers.org/training/knowledge-studio>

 **Parents as Teachers**

Putting it all Together

○

Review PAT Essential Requirements and program approach


Register for and attend training

Implement PAT with fidelity to model and/or practices

Complete and submit the annual reports as appropriate

Maintain staff certification

Affiliates conduct a program self-assessment every four years

 **Parents as Teachers**

Questions



Parents as Teachers is uniquely positioned to help achieve the stated outcomes of your program.

Visit www.parentsasteachers.org to review results of research and evaluation.



Parents as Teachers

Join Us Again!



Please join us again on February 10th and 17th, from 11-11:30 a.m. to learn more about the following:

February 10, 2012: Essential Requirements

February 17, 2012: Model Fidelity and Quality Assurance



Parents as Teachers